

Proposal for South Warwickshire Community Emergency response Team

Jane Ives

Caron Williams

Di King

Purpose of Presentation to HoSC

- The Health Overview and scrutiny committee are asked to consider whether the proposal represents a significant service change that requires a full public consultation.

Proposal

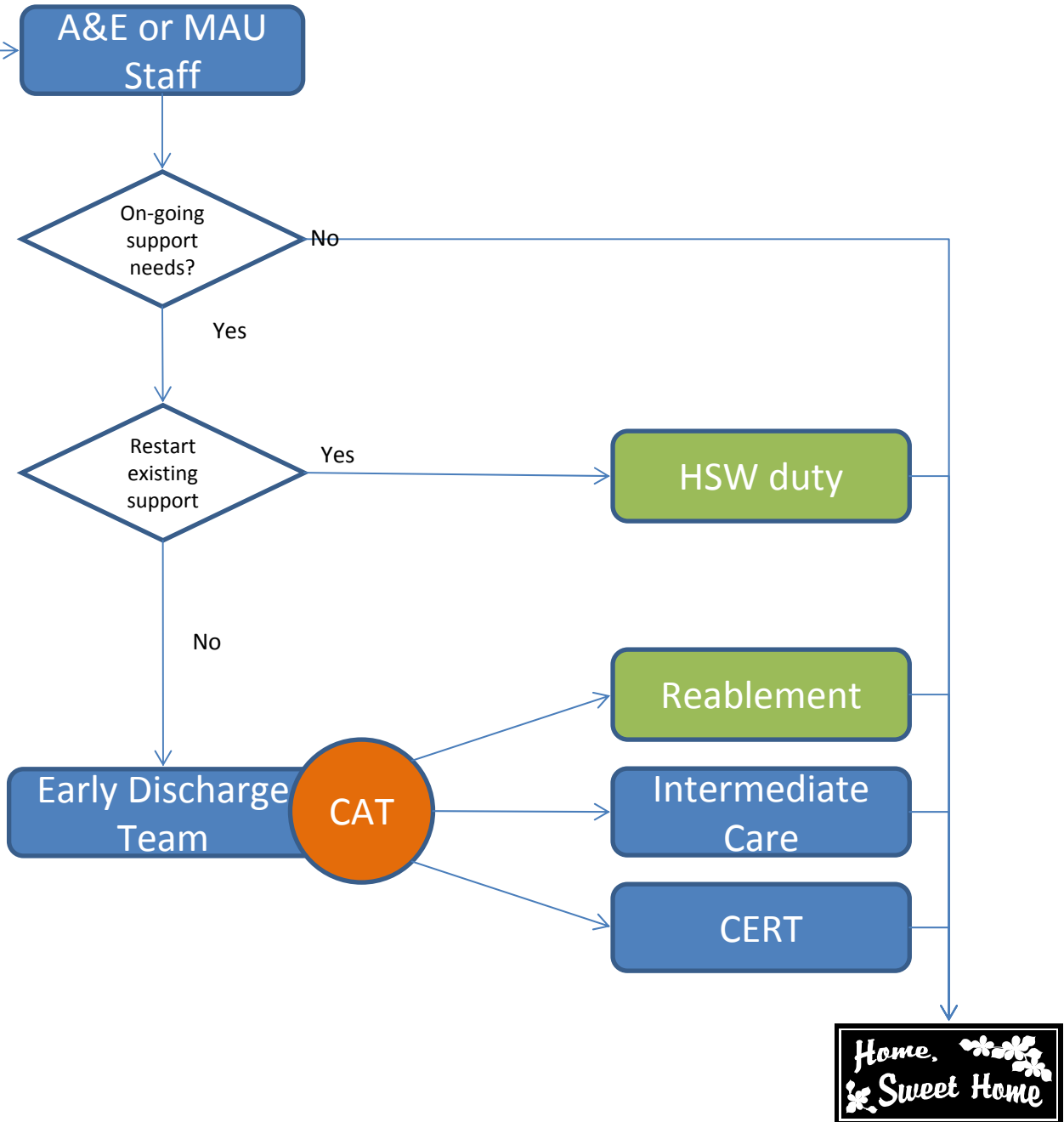
- Reconfiguration of existing resources into a new model of care.
- Transferring and downsizing in line with identified need a ward from the Royal Leamington Spa Rehabilitation Hospital onto the Warwick Hospital site.
- Using the resources freed up to invest in an expanded intermediate care team so it can provide a community emergency response to patients who may not require acute hospital admission and to patient being discharged earlier from the acute setting.
- Implementing and embedding pathways through health and social care teams to reduce duplication and simplify the pathways for patients and staff.

Evidence

- Supported by international evidence
- Pathways developed in North Warwickshire that will be built upon in the South of the county
- Emerging evidence from the North model

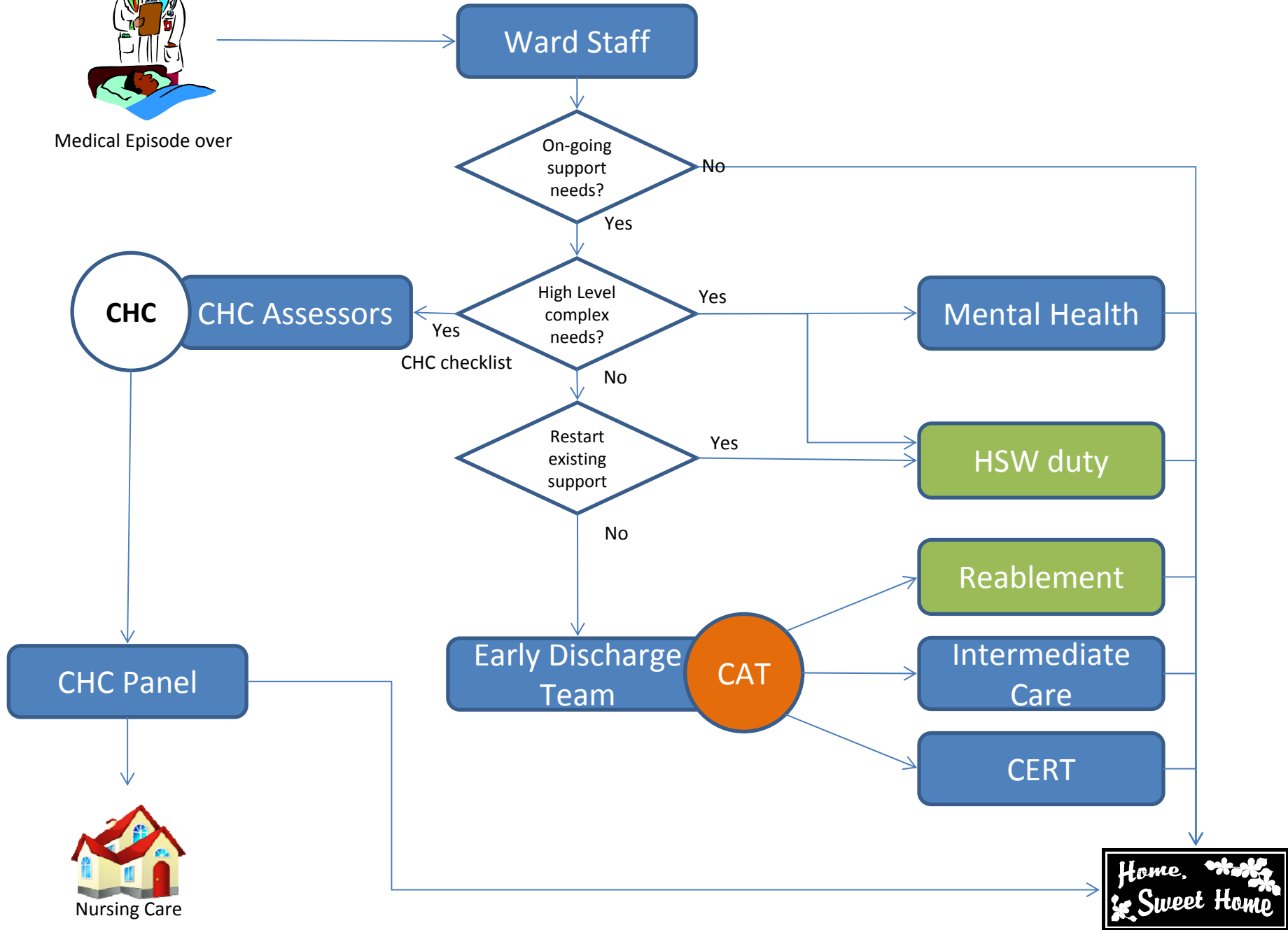


Acute Admission
Unnecessary

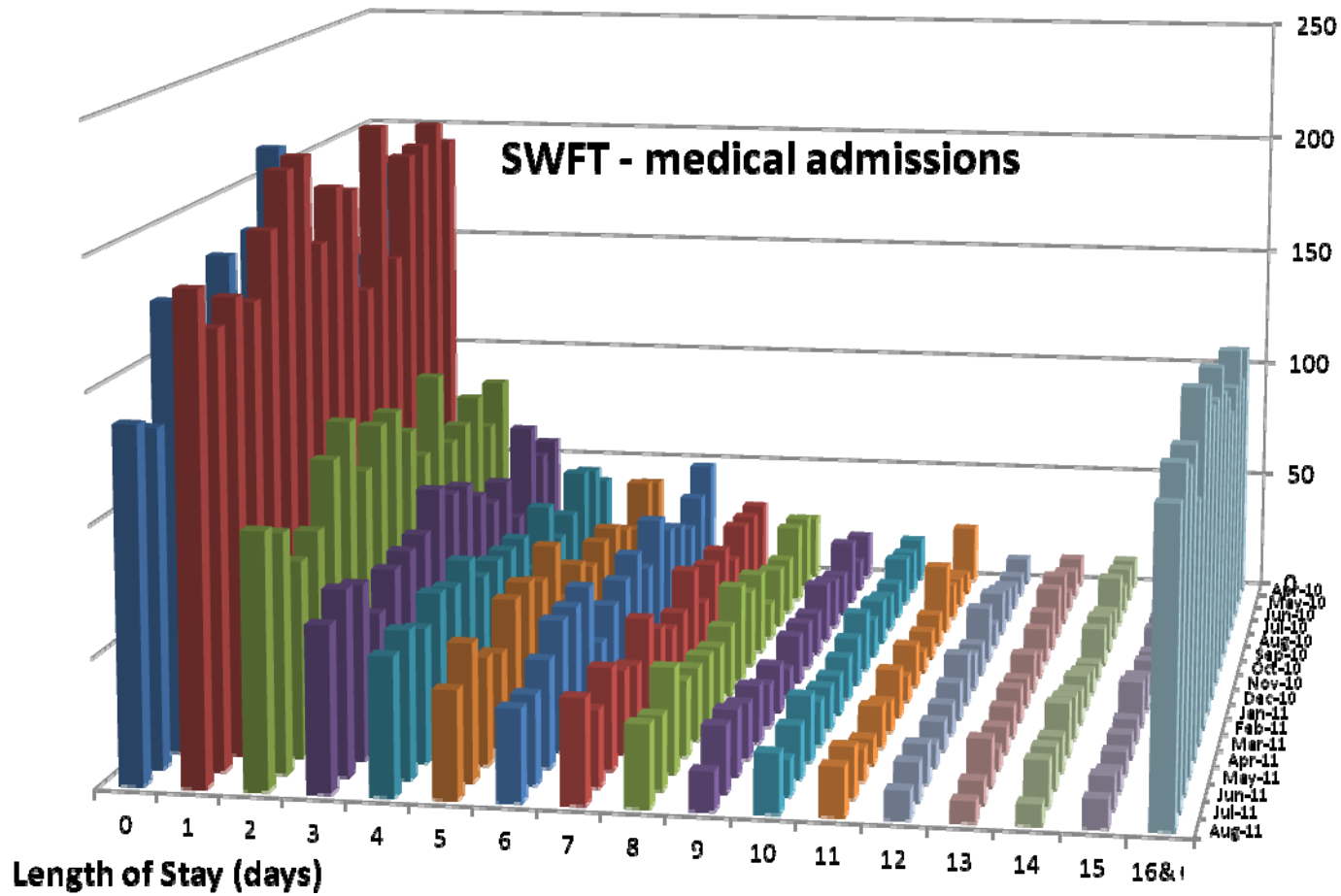




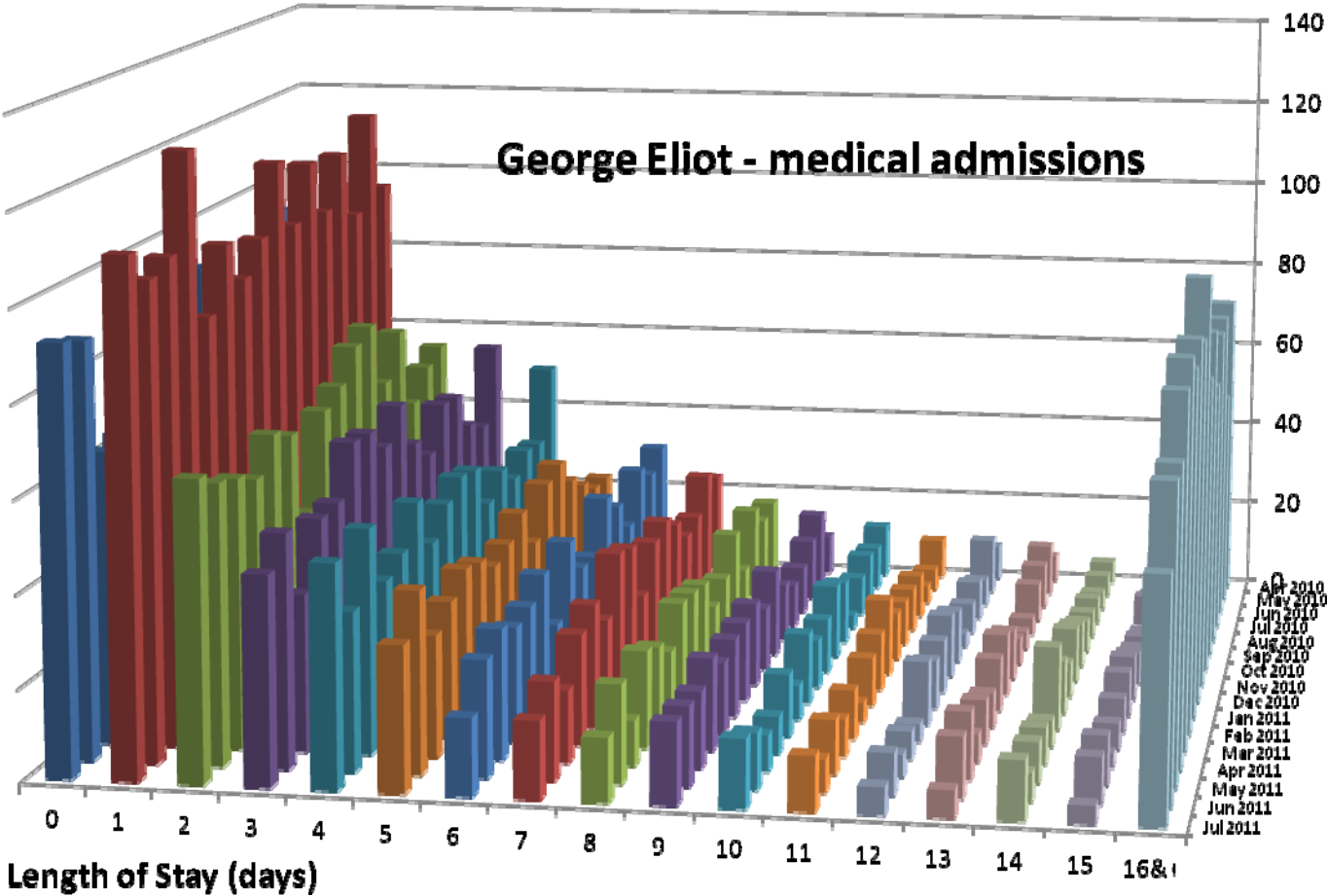
Medical Episode over



SWFT LOS Profile.



GEH



Any Questions?